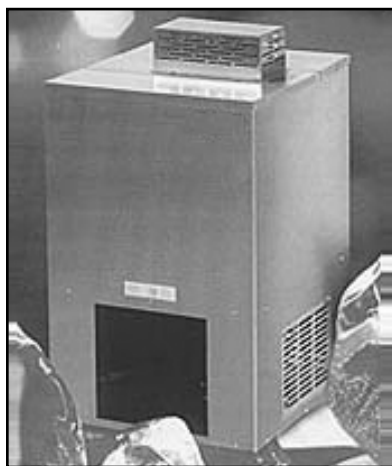
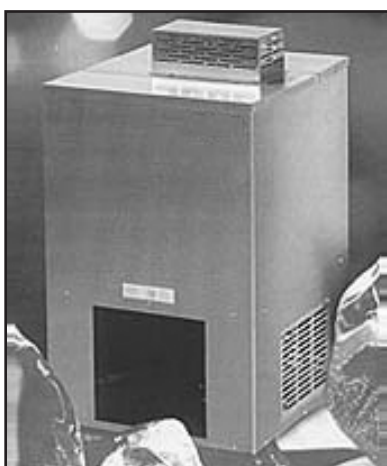


## INTRODUCING THE UNISOURCE HEAVY DUTY COOL MATE™ II WATER COOLERS

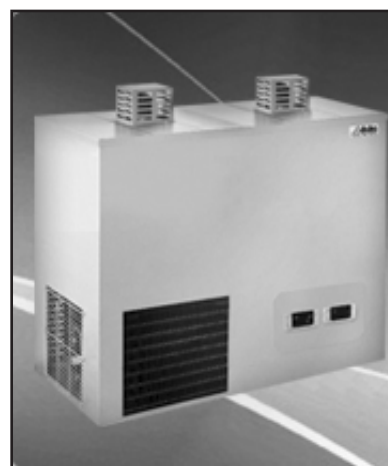
Forget All Your Warm Weather Doughmaking Problems!



**UNI-DKS-150**



**UNI-DKS-250**



**UNI-DKS-300**

This proven system works without a pressure pump and can be combined with every water mixing and dosing appliance.

Compact construction with stainless steel cabinet suitable for wall mounting or installation in a neighbouring room.

The ice layer which accumulates during non-operating periods provides a great reserve of energy and ensures top cooling performance.

### ADVANTAGES:

- Hygienic, sealed flow system
- No pressure pump required
- Functions at normal mains pressure
- Compact and robust
- Top cooling performance
- Low energy requirements
- Can be combined with all mixing and dosing appliances

SPECIFICATIONS	UNI-DKS-150	UNI-DKS-250	UNI-DKS-300
<b>Tank capacity</b>	90 litres	90 litres	150 litres
<b>Coolant</b>	R 134 a (FCKW-free)	R 134 a (FCKW-free)	R 134 a (FCKW-free)
<b>Electricity supply / Power requirement</b>	220 V., 730 Watts	220 V., 1070 Watts	220 V., 1200 Watts
<b>Cooling capacity (litres per hour)</b>	150 litres from +15 °C to +2 °C	150 litres from +15 °C to +2 °C	300 litres from +15 °C to +2 °C
<b>Dimensions in Inches H x W x D</b>	33" x 19" x 20"	35" x 19" x 20"	38" x 37" x 22"
<b>Weight in Lbs.</b>	135 lbs.	143 lbs.	209 lbs.
<b>Water connections</b>	1/2"	1/2"	3/4"