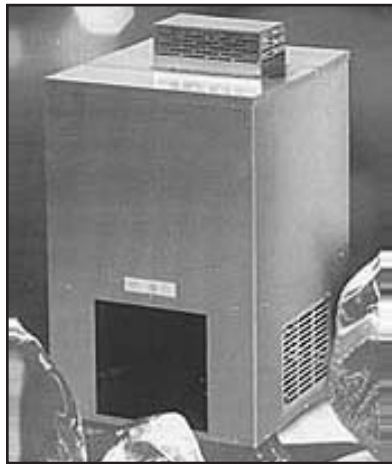


**INTRODUCING**  
**THE UNISOURCE HEAVY DUTY**  
**COOL MATE™ II WATER COOLERS**

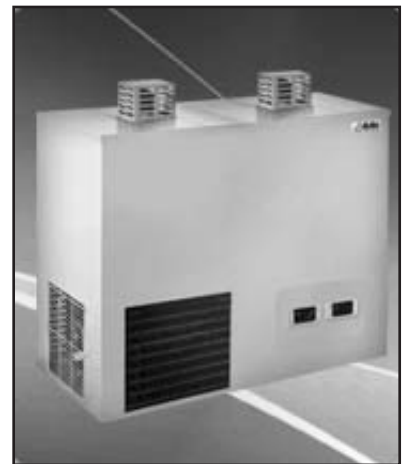
**Forget All Your Warm Weather Doughmaking Problems!**



**UNI-DKS-150**



**UNI-DKS-250**



**UNI-DKS-300**

This proven system works without a pressure pump and can be combined with every water mixing and dosing appliance.

Compact construction with stainless steel cabinet suitable for wall mounting or installation in a neighboring room.

The ice layer which accumulates during non-operating periods provides a great reserve of energy and ensures top cooling performance.

**ADVANTAGES:**

- Hygienic, sealed flow system
- No pressure pump required
- Functions at normal mains pressure
- Compact and robust
- Top cooling performance
- Low energy requirements
- Can be combined with all mixing and dosing appliances

<b>SPECIFICATIONS</b>	<b>UNI-DKS-150</b>	<b>UNI-DKS-250</b>	<b>UNI-DKS-300</b>
<b>Tank capacity</b>	90 litres	90 litres	150 litres
<b>Coolant</b>	R 134 a (FCKW-free)	R 134 a (FCKW-free)	R 134 a (FCKW-free)
<b>Electricity supply / Power requirement</b>	220 V.,730 Watts	220 V.,1070 Watts	220 V.,1200 Watts
<b>Cooling capacity (litres per hour)</b>	150 litres from +15 °C to +2 °C	200 litres from +15 °C to +2 °C	300-350 litres from +15 °C to +2 °C
<b>Dimensions in Inches H x W x D</b>	33" x 19" x 20"	35" x 19" x 20"	38" x 37" x 22"
<b>Weight in Lbs.</b>	135 lbs.	143 lbs.	209 lbs.
<b>Water connections</b>	1/2"	1/2"	3/4"

Direct Phone & Service: (516) 527-3309 • (888) 443-7014 • [info@unisourcefoodequipment.com](mailto:info@unisourcefoodequipment.com) • [unisourcefoodequipment.com](http://unisourcefoodequipment.com)  
170 Wilbur Place, Suite 300, Bohemia, New York, 11716